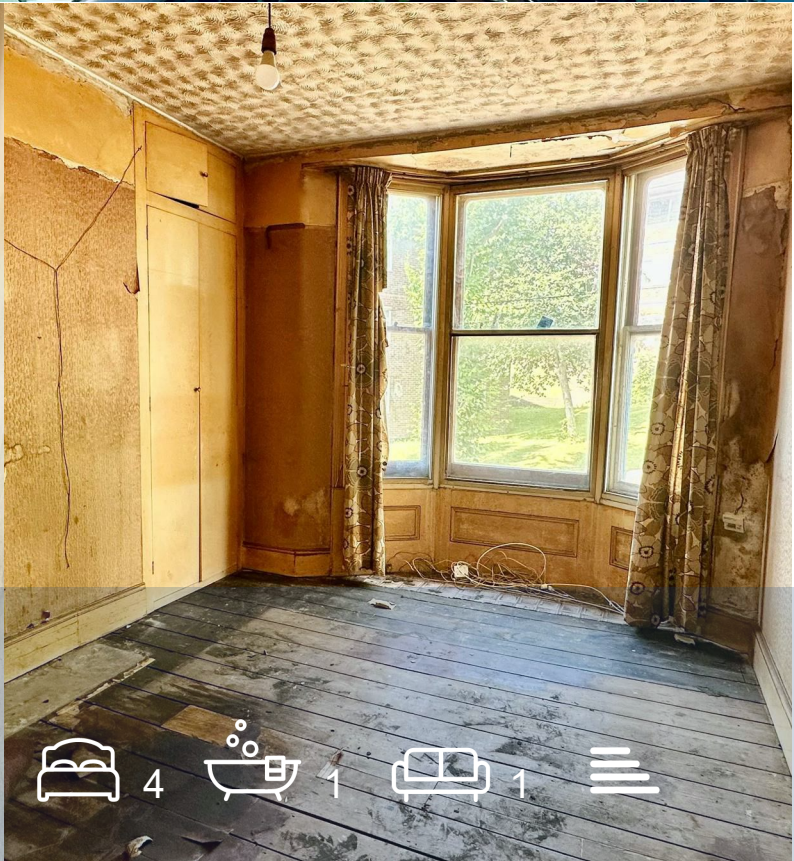


Avard

Estate Agents



20 Wakefield Road

, Brighton, BN2 3FP

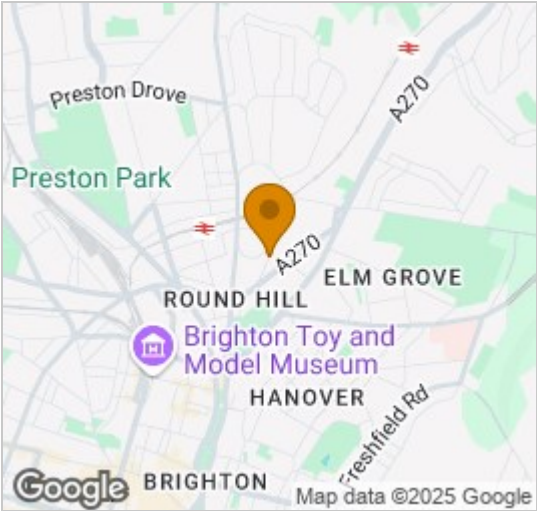
£425,000



Floor Plan



Area Map

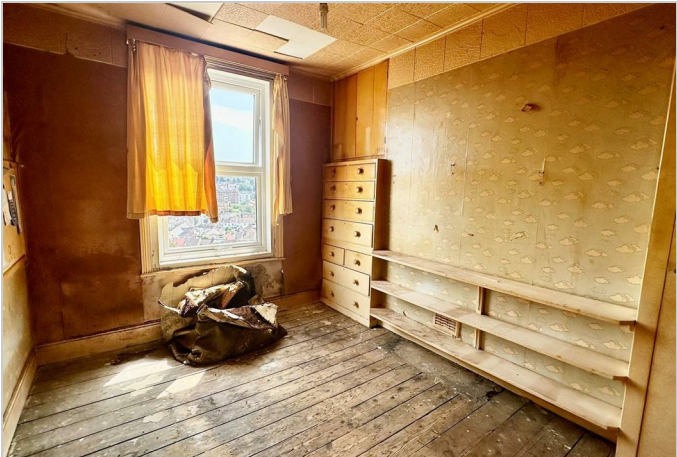


Energy Efficiency Graph



Viewing

Please contact our Avard Estate Agents Office on 01273696000 if you wish to arrange a viewing appointment for this property or require further information.



Avard Estate Agents are delighted to present this 4 bedroom Victorian family house in need of updating and refurbishing, located on Wakefield Road in the sought-after Roundhill conservation area of Brighton. This charming home is perfectly positioned between the vibrant Fiveways and the Level area.

For those commuting, London Road train station is approximately 500 metres away, offering excellent links to Gatwick Airport and London, while Brighton mainline train station is about 1 kilometre from your doorstep. The area is also home to several popular gastro pubs, such as The Roundhill, Signalman, Open House, and Martha Gun, ensuring you are never far from a delightful dining experience.



These particulars, whilst believed to be accurate are set out as a general outline only for guidance and do not constitute any part of an offer or contract. Intending purchasers should not rely on them as statements of representation of fact, but must satisfy themselves by inspection or otherwise as to their accuracy. No person in this firms employment has the authority to make or give any representation or warranty in respect of the property.